

## CRYSTAL STRUCTURE AND HIRSHFELD SURFACE ANALYSIS OF 4-{2,2-DICHLORO-1-[(E)-(2,4-DICHLOROPHENYL)DIAZENYL]ETHENYL}-N,N-DIMETHYLANILINE

A.M. Maharramov<sup>1</sup>, U.F. Askerova<sup>1</sup>, N.E. Ahmedova<sup>1</sup>, A.B. Askarov<sup>2</sup>, D.B. Tagiyev<sup>3</sup>, Sh.I. Gahramanova<sup>3</sup>, I.M. Shikhaliyeva<sup>1</sup>, S.H. Mukhtarova<sup>4</sup>, M. Akkurt<sup>5</sup>

<sup>1</sup>Baku State University, 23 Academic Zahid Khalilov Street, 1148 Baku, Azerbaijan, email: [askerova.ulviyya.69@gmail.com](mailto:askerova.ulviyya.69@gmail.com), [sahnaz.gahramanova@gmail.com](mailto:sahnaz.gahramanova@gmail.com).

<sup>2</sup>Sumgait State University, 1 Baku Street, 5008, Sumgait, Azerbaijan

<sup>3</sup>Institute of Catalysis and Inorganic Chemistry, H.Javid Ave. 113, AZ1143Baku, Azerbaijan

<sup>4</sup>Azerbaijan Technical University, 25 Huseyn Javid Avenue, Baku 1073, Baku, Azerbaijan

<sup>5</sup>Erciyes University, Yenidogan, Turhan Baytop Street No:1, 38280 Talas, Kayseri, Turkey

Received 05.03.2024

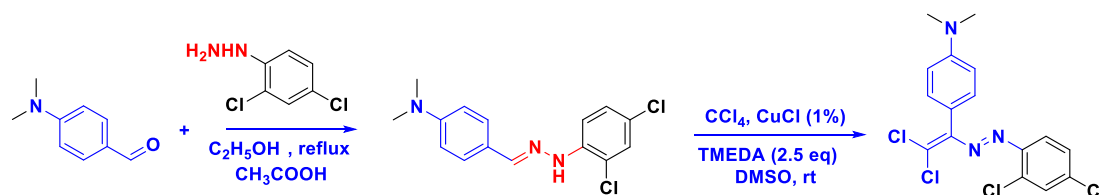
Accepted 06.05.2024

**Abstract:** In the title compound,  $C_{16}H_{13}Cl_4N_3$ , the dihedral angle between the benzene rings of the dichlorophenyl and dimethylaniline groups is  $50.85 (13)^\circ$ . The central  $-N=N-$  unit shows an *E* configuration. In the crystal, molecules form parallel layers to the (100) plane by  $C-H\cdots\pi$  and face-to-face  $\pi-\pi$  [centroid-to-centroid distances =  $4.0538 (17)$  and  $4.0537 (17) \text{ \AA}$ ] interactions. These layers are connected by Van der Waals interactions to stabilize the crystal structure. Hirshfeld surface analysis indicates that the most important contributions for the crystal packing are from  $Cl\cdots H/H\cdots Cl$  (36.4%),  $H\cdots H$  (23.3%) and  $C\cdots H/H\cdots C$  (15.2%) contacts.

**Key words:** Molecule structure, Dichlorodiazadienes, Fingerprint, Dimethylaniline group, Van der Waals interactions

### 1. Introduction

Corresponding dihalodiazabutadiene derivatives were synthesized from the reaction of *N*-substituted hydrazones of various benzoic aldehyde derivatives with polyhalogen alkanes in the presence of  $CuCl$  catalyst [1-2]. The synthesized compounds were studied as dyes [3-4]. At the same time, due to strong reactivity, they have been applied as convenient synthons in the synthesis of many compounds [5]. Similar studies were also conducted on the basis of dimethylamino benzoic aldehyde and corresponding new diazo dyes were synthesized [6-8]. In this article, we provide information about the synthesis and structural features of a new diazo dye “4-{2,2-dichloro-1-[(*E*)-(2,4-dichlorophenyl)diazenyl]ethenyl}-*N,N*-dimethylaniline” (**Scheme 1**).



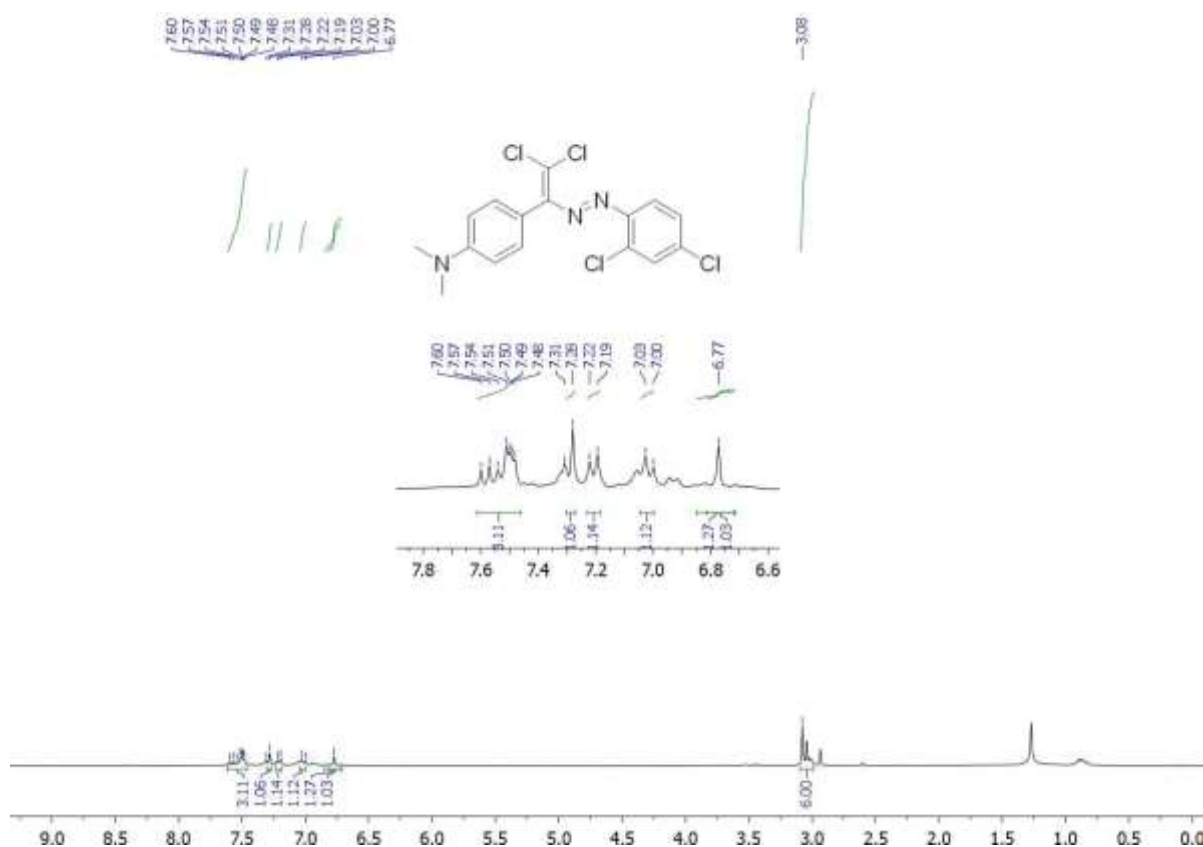
**Scheme 1.** Synthesis of 4-{2,2-dichloro-1-[(*E*)-(2,4-dichlorophenyl)diazenyl]ethenyl}-*N,N*-dimethylaniline

Investigation of intermolecular interactions of title compound was provided by Hirshfeld surface analysis [9-10], which has been widely used to study intermolecular interactions in the crystal structure in recent years [11-12].

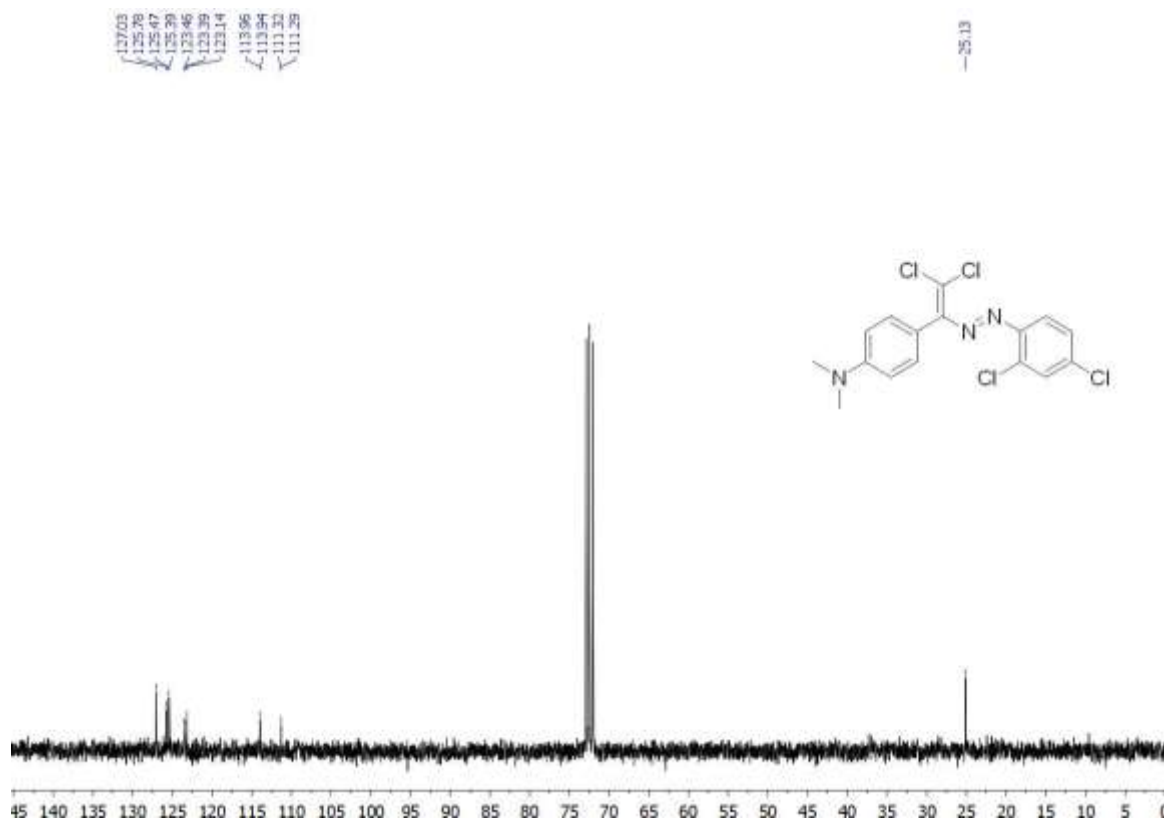
## 2. Material and Methods

The syntheses of compounds were carried out at the Organic Chemistry Department of Baku State University (Baku, Azerbaijan). Every reagent utilized in this investigation came from commercial source (Aldrich, TCI-Europe, Strem, ABCR). NMR spectra were recorded on a Bruker Avance 300 (1H: 300 MHz, Karlsruhe, Germany); chemical shifts ( $\delta$ ) are given in *ppm* relative to TMS, coupling constants (*J*) in *Hz*. The solvent signals were used as references (CDCl<sub>3</sub>  $\delta$ H = 7.26 ppm,  $\delta$ C = 77.16 pp). The X-ray analyses of compound was carried out using the Bruker APEX II CCD diffractometer (T = 296 K,  $\lambda$ (MoK $\alpha$ ) - radiation, graphite monochromator,  $\phi$ - and  $\omega$ -scan).

Dye was synthesized according to a literature protocol [1]. A 20 ml screw-neck vial was charged with dimethyl sulfoxide (DMSO; 10 ml), (E)-4-((2-(2,4-dichlorophenyl)hydrazineylidene)methyl)-N,N-dimethylaniline (308 mg, 1 mmol), tetramethylethylenediamine (TMEDA; 295 mg, 2.5 mmol), CuCl (2 mg, 0.02 mmol) and CCl<sub>4</sub> (20 mmol, 10 equiv). After 1–3 h (until TLC analysis showed complete consumption of the corresponding Schiff base), the reaction mixture was poured into a 0.01 M solution of HCl (100 mL, pH = 2-3), and extracted with dichloromethane (3 \* 20 ml). The combined organic phase was washed with water (3 \* 50 ml), brine (30 ml), dried over anhydrous Na<sub>2</sub>SO<sub>4</sub> and concentrated in vacuo in a rotary evaporator. The residue was purified by column chromatography on silica gel using appropriate mixtures of hexane and dichloromethane (v/v = 3/1–1/1). white solid (yield 75%); m.p. 405 K. Analysis calculated for C<sub>16</sub>H<sub>13</sub>Cl<sub>4</sub>N<sub>3</sub> (M = 389.10). <sup>1</sup>H NMR (300 MHz, Chloroform-d)  $\delta$  7.61 – 7.46 (m, 3H), 7.28 (s, 1H), 7.21 (d, *J* = 8.5 Hz, 1H), 7.01 (d, *J* = 8.5 Hz, 1H), 6.77 (s, 1H), 3.08 (s, 6H). <sup>13</sup>C NMR (75 MHz, CDCl<sub>3</sub>)  $\delta$  127.0, 125.7, 125.4, 125.3, 123.4, 123.3, 123.1, 113.9, 113.9, 111.3, 111.2, 25.1. Compound was dissolved in dichloromethane and then left at room temperature for slow evaporation; red crystal of compound suitable for X-rays started to form after ca 2 d.



**Fig. 1.** <sup>1</sup>H NMR spectrum of synthesized compound in CDCl<sub>3</sub> solution.

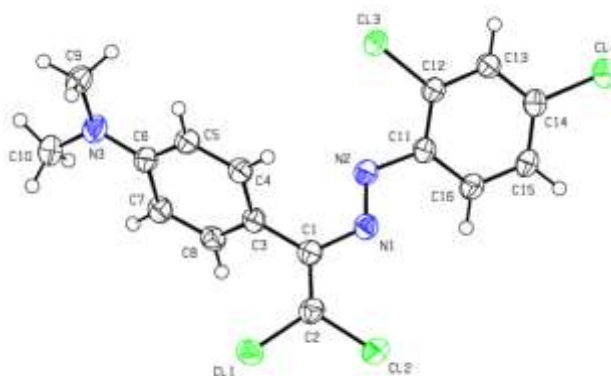


**Fig. 2.**  $^{13}\text{C}$  NMR spectrum of synthesized compound in  $\text{CDCl}_3$  solution.

### 3. Result and discussion

#### 3.1. Structural commentary

In the title compound, (Fig. 3), the dihedral angle between the benzene rings (C3–C8 and C11–C16) of the dichlorophenyl and dimethylaniline groups is  $50.85(13)^\circ$ . The title molecule adopts an *E* configuration with respect to the N1=N2 bond. The N1/N2/C1–C3/C11/C12 unit is approximately planar with a maximum deviation of  $-0.165(2) \text{ \AA}$ , and makes dihedral angles of  $57.37(10)$  and  $16.91(11)^\circ$ , respectively, with the C3–C8 and C11–C16 benzene rings. CCDC no:2333616.



**Fig. 3.** The molecular structure of the title compound, showing the atom labelling and displacement ellipsoids drawn at the 50% probability level.

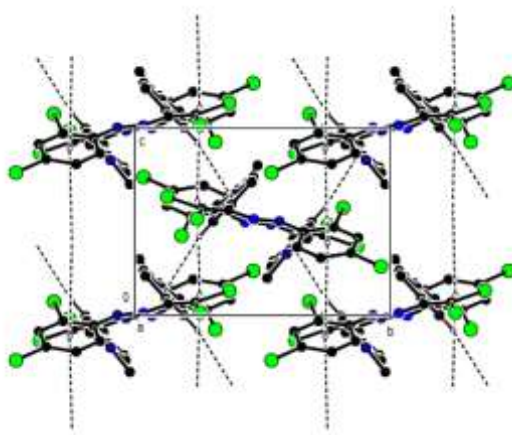
### 3.2. Supramolecular features and Hirshfeld surface analysis

In the crystal, molecules form parallel layers to the (100) plane by C—H $\cdots$  $\pi$  (Table 1) and face-to-face  $\pi$ - $\pi$  [ $Cg2\cdots Cg2^a = 4.0538$  (17) Å and  $Cg2\cdots Cg2^b = 4.0537$  (17) Å; symmetry codes (a)  $x, 3/2 - y, -1/2 + z$  and (b)  $x, 3/2 - y, 1/2 + z$ ;  $Cg2$  is a centroid of the dichlorophenyl ring (C11-C16)] interactions (Figures 4, 5 and 6).

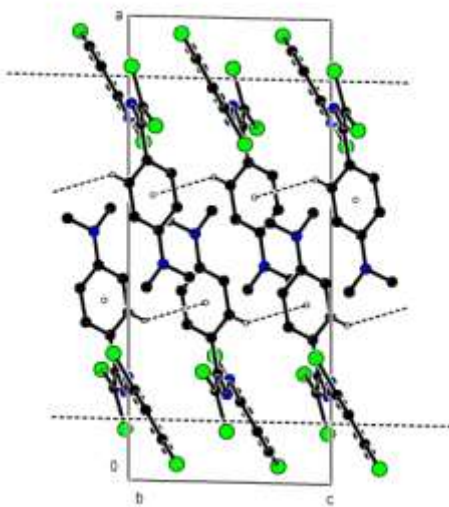
**Table 1.** Hydrogen-bond geometry (Å, °)  
(“D” and “A” are donor and acceptor, respectively.)

$D-H\cdots A$	$D-H$	$H\cdots A$	$D\cdots A$	$D-H\cdots A$
$C8-H8\cdots Cg1^i$	0.95	2.98	3.789 (3)	144

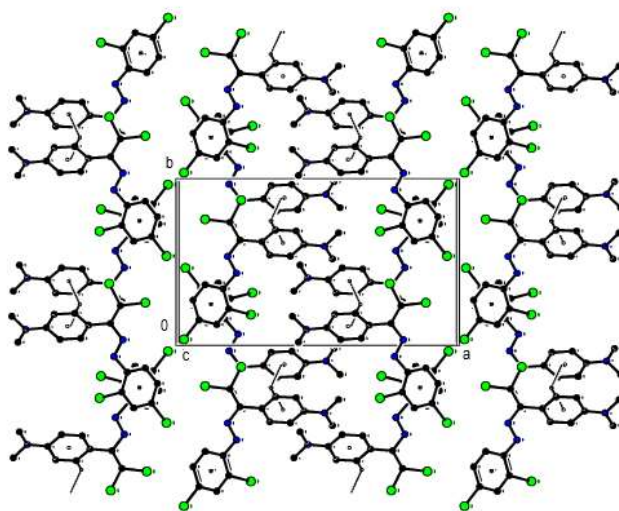
Symmetry code: (i)  $x, -y-1/2, z-3/2$ .



**Fig. 4.** The crystal packing of the title compound viewed along the  $a$ -axis with intermolecular C—H $\cdots$  $\pi$  interactions and face-to-face  $\pi$ - $\pi$  interactions shown as dashed lines.



**Fig. 5.** The crystal packing of the title compound viewed along the  $b$ -axis with intermolecular C—H $\cdots$  $\pi$  interactions and face-to-face  $\pi$ - $\pi$  interactions shown as dashed lines.



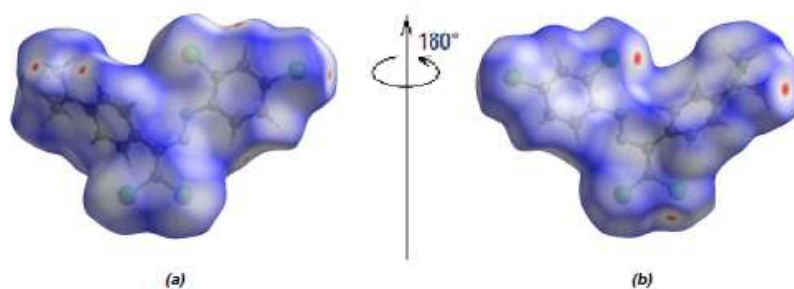
**Fig. 6.** The crystal packing of the title compound viewed along the  $c$ -axis with intermolecular C—H $\cdots\pi$  interactions and face-to-face  $\pi$ - $\pi$  interactions shown as dashed lines.

These layers are additionally bound by the Van der Waals interactions stabilizing the crystal structure (Table 2).

**Table 2.** Summary of short interatomic contacts ( $\text{\AA}$ ) in the title compound

C11 $\cdots$ H13	2.86	$x, -1+y, z$
C4 $\cdots$ H8	2.90	$x, 1/2-y, 1/2+z$
H15 $\cdots$ Cl2	3.14	$2-x, 1-y, 1-z$
H5 $\cdots$ H10C	2.52	$1-x, 1/2+y, 3/2-z$
H10A $\cdots$ C5	2.90	$1-x, 1-y, 1-z$
C11 $\cdots$ C14	3.47	$x, 1/2-y, -1/2+z$

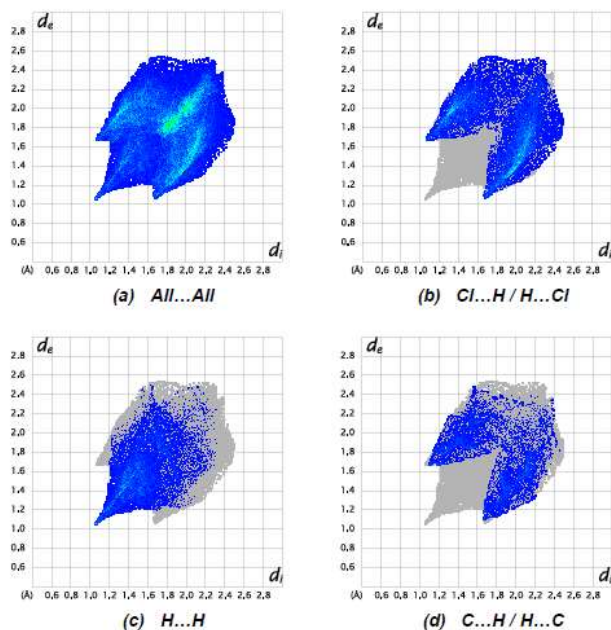
To visualize the intermolecular interactions in the title molecule, *CrystalExplorer17.5* [13] was used to compute Hirshfeld surfaces and their corresponding two-dimensional fingerprint plots. In the Hirshfeld surface mapped over  $d_{\text{norm}}$  (Fig. 7).



**Fig. 7.** (a) Front and (b) back sides of the three-dimensional Hirshfeld surface of the title compound mapped over  $d_{\text{norm}}$ , with a fixed colour scale of  $-0.0653$  to  $+1.0161$  a.u.

Fig. 8 depicts the two-dimensional fingerprint plots of ( $d_i$ ,  $d_e$ ) points from all the contacts contributing to the Hirshfeld surface analysis in normal mode for all atoms. The most important

intermolecular interactions are Cl $\cdots$ H/H $\cdots$ Cl contacts, contributing 36.4% to the overall crystal packing. Other interactions and their respective contributions are H $\cdots$ H (23.3%), C $\cdots$ H/H $\cdots$ C (15.2%), Cl $\cdots$ C/C $\cdots$ Cl (6.2%), Cl $\cdots$ Cl (5.7%), C $\cdots$ C (4.0%), Cl $\cdots$ N/N $\cdots$ Cl (3.9%) and N $\cdots$ C/C $\cdots$ N (2.0%), respectively



**Fig. 8.** The full two-dimensional fingerprint plots for the title compound, showing (a) all interactions, and delineated into (b) Cl $\cdots$ H/H $\cdots$ Cl, (c) H $\cdots$ H and (d) C $\cdots$ H/H $\cdots$ C interactions. The  $d_i$  and  $d_e$  values are the closest internal and external distances (in Å) from given points on the Hirshfeld surface.

### 3.3. Database Survey

A search of the Cambridge Structural Database (CSD, Version 5.42, update of September 2021; [14]) for structures having an (*E*)-1-(2,2-dichloro-1-phenylethenyl)-2-phenyldiazene unit gave 26 hits. Six compounds closely resemble the title compound, *viz.* HAFXOF, DULTAI [15], HODQAV [15], HONBOE, HONBUK and XIZREG.

In the crystal of HAFXOF, C—H $\cdots$ N interactions, C—Cl $\cdots$  $\pi$  and  $\pi$ - $\pi$  stacking interactions [centroid-to-centroid distance = 3.7719 (14) Å] link the molecules, forming molecular layers approximately parallel to the (002) plane. Additional weak Van der Waals interactions between the layers consolidate the three-dimensional packing. In the crystal of DULTAI, the molecules are connected by a short Cl $\cdots$ H contact (2.96 Å) and C—Cl $\cdots$  $\pi$  interactions, which contribute to the overall packing energy stabilization, into infinite columns along the *a*-axis direction. In HODQAV, molecules are stacked in columns along the *a* axis *via* weak C—H $\cdots$ Cl hydrogen bonds and face-to-face  $\pi$ - $\pi$  stacking interactions. The crystal packing is further stabilized by short Cl $\cdots$ Cl contacts. In the crystals of HONBOE and HONBUK, molecules are linked through weak X $\cdots$ Cl contacts [X = Br for HONBOE and Cl for HONBUK] and C—H $\cdots$ Cl and C—Cl $\cdots$  $\pi$  interactions into sheets parallel to the *ab* plane. In XIZREG, molecules are linked by C—H $\cdots$ O hydrogen bonds into chains running parallel to the *c* axis. The crystal packing is further stabilized by C—Cl $\cdots$  $\pi$ , C—F $\cdots$  $\pi$  and N—O $\cdots$  $\pi$  interactions

### 3.4. Refinement

Crystal data, data collection and structure refinement details are summarized in Table 3. All H atoms were positioned geometrically and treated as riding atoms, C—H = 0.95 Å with  $U_{\text{iso}}(\text{H}) = 1.2U_{\text{eq}}(\text{C})$  for aromatic H atoms and C—H = 0.98 Å with  $U_{\text{iso}}(\text{H}) = 1.5U_{\text{eq}}(\text{C})$  for methyl H atoms. Owing to poor agreement between observed and calculated intensities, twenty four outliers (1 14 0,

-1 13 2, 1 12 2, 2 12 1, 1 12 0, 1 12 3, 0 12 1, 0 13 4, 1 9 2, 0 10 0, 1 10 3, 2 10 0, -2 13 3, 0 14 2, 0 12 2, -1 12 3, -2 12 2, 2 9 0, 1 13 2, -2 13 4, 0 13 3, 0 11 3, -1 10 3, 3 9 2) were omitted during the final refinement cycle.

<b>Table 3.</b> Experimental details	
Chemical formula	C <sub>16</sub> H <sub>13</sub> Cl <sub>4</sub> N <sub>3</sub>
$M_r$	389.09
Crystal system, space group	Monoclinic, $P2_1/c$
Temperature (K)	100
$a; b; c$ (Å)	18.6030 (17); 11.0500 (12); 8.1050 (7)
$\beta$ (°)	91.393 (8)
$V$ (Å <sup>3</sup> )	1665.6 (3)
$Z$	4
Radiation type	Synchrotron, $\lambda = 0.79313$ Å
$\mu$ (mm <sup>-1</sup> )	0.96
Crystal size (mm)	0.23 × 0.15 × 0.12
Diffractometer	Rayonix SX165 CCD
Absorption correction	Multi-scan <i>SCALA</i> [16]
$T_{\min}, T_{\max}$	0.789, 0.876
No. of measured, independent and observed [ $I > 2\sigma(I)$ ] reflections	12533, 3761, 3040
$R_{\text{int}}$	0.064
$(\sin \theta/\lambda)_{\text{max}}$ (Å <sup>-1</sup> )	0.649
$R[F^2 > 2\sigma(F^2)], wR(F^2), S$	0.055, 0.150, 1.03
No. of reflections	3761
No. of parameters	211
H-atom treatment	H-atom parameters constrained
$\Delta\rho_{\text{max}}, \Delta\rho_{\text{min}}$ (e Å <sup>-3</sup> )	0.64, -0.57
<i>Computer programs: Marccd</i> [17], <i>iMosflm</i> [18], <i>SHELXT</i> [19], <i>SHELXL</i> [20], <i>ORTEP-3 for Windows</i> [21], <i>PLATON</i> [22].	

#### 4. Conclusion

The dihedral angle between the benzene rings of the dichlorophenyl and dimethylaniline groups in the title compound, C<sub>16</sub>H<sub>13</sub>Cl<sub>4</sub>N<sub>3</sub>, is 50.85 (13)°. The title molecule shows an *E*

configuration with respect to the –N=N– unit between the aromatic rings. If the two groups of higher priority are on opposite sides of the double bond (*trans* to each other), the bond is assigned the configuration *E* (from *entgegen*, the German word for "opposite"). The molecules ensure the stability of the crystal structure by forming layers parallel to the (100) plane through C—H··· $\pi$  and face-to-face  $\pi$ - $\pi$  stacking interactions. Thus, important information was obtained about the synthesis and structural properties of a new diazo dye, "4-{2,2-dichloro-1-[(*E*)-(2,4-dichlorophenyl)diazenyl]ethenyl}-*N,N*-dimethylaniline".

## References

1. Shikhaliyev N.Q., İbrahimova S.A., Atakishiyeva G.T., Ahmedova N.E. et.al., Crystal structures and Hirshfeld surface analyses of methyl 4-{2, 2-dichloro-1-[(*E*)-phenyldiazenyl] ethenyl} benzoate, methyl 4-{2, 2-dichloro-1-[(*E*)-(4-methylphenyl) diazenyl] ethenyl} benzoate and methyl 4-{2, 2-dichloro-1-[(*E*)-(3, 4-dimethylphenyl) diazenyl] ethenyl} benzoate // *Acta Crystallographica Section E: Crystallographic Communications*, 2024, V. 80(2). <https://doi.org/10.1107/S2056989024000732>
2. Shikhaliyev N.G., Suleymanova G.T., İsayilova A.A., Ganbarov K.G., Babayeva G.V., et al. Synthesis, characterization and antibacterial studies of dichlorodiazadienes // *Organic Chemistry*, 2019, (part vi) p. 64-73. <https://doi.org/10.24820/ark.5550190.p010.979>
3. Atakishiyeva G.T., Qajar A.M., Babayeva G.V., Mukhtarova S.H., et.al., Biological new targets prediction & adme profiling of 1, 1-dichlorodiazadienes on the basis of o-nitrobenzoic aldehyde // *New Materials, Compounds and Applications*, 2023, V. 7(2), p. 84-92.
4. Shikhaliyev N.G., Suleymanova G.T., Bagirova K.N., Asgerova U.F., et.al., Synthesis of dihalogendiazadiene and farmazan derivatives in the catalytic olefinization reaction // *Dimensional Systems*, 2018, V. 2, p. 24-32.
5. Shikhaliyev N.G., Maharramov A.M., Suleymanova G.T., Babazade A.A., Nenajdenko V.G., et.al., Arylhydrazones of  $\alpha$ -keto esters via methanolysis of dichlorodiazabutadienes: Synthesis and structural study // *Mendeleev Communications*, 2021, V. 31(5), p. 677-9 <https://doi.org/10.1016/j.mencom.2021.09.028>
6. Shikhaliyev N.Q., Atioğlu Z., Akkurt M., Suleymanova G.T., et.al., Crystal structure and Hirshfeld surface analysis of (E)-4-({2, 2-dichloro-1-[4-(dimethylamino) phenyl] ethenyl} diazenyl) benzonitrile // *Acta Crystallographica Section E: Crystallographic Communications*, 2021, V. 77(10), p. 994-998. <https://doi.org/10.1107/S2056989021009154>
7. Özkaraca K., Akkurt M., Shikhaliyev N.Q., Askerova U.F., Suleymanova G.T., et al. Crystal structure and Hirshfeld surface analysis of 4-{2, 2-dichloro-1-[(*E*)-2-(4-methylphenyl) diazen-1-yl] ethenyl}-*N,N*-dimethylaniline // *Acta Crystallographica Section E: Crystallographic Communications*, 2020, V. 76(7), p. 1122-5. <https://doi.org/10.1107/S2056989020007744>
8. Özkaraca K., Akkurt M., Shikhaliyev N.Q., Askerova U.F., Suleymanova G.T., et al. Crystal structure and Hirshfeld surface analysis of (E)-4-{2, 2-dichloro-1-[(3, 5-dimethylphenyl) diazenyl] ethenyl}-*N,N*-dimethylaniline // *Acta Crystallographica Section E: Crystallographic Communications*, 2020, V. 76(8), p. 1251-4. <https://doi.org/10.1107/S2056989020009202>
9. Suda S., Tateno A., Nakane D., Akitsu T. Hirshfeld Surface Analysis for Investigation of Intermolecular Interaction of Molecular Crystals // *International Journal of Organic Chemistry*, 2023, V. 13(2), p. 57-85 , 10.4236/ijoc.2023.132006
10. McKinnon J.J., Fabbiani F.P., Spackman M.A. Comparison of polymorphic molecular crystal structures through Hirshfeld surface analysis // *Crystal growth & design*, 2007, V. 7(4), p. 755-769. <https://doi.org/10.1021/cg060773k>
11. Guerrab W., Lgaz H., Kansiz S., Mague J.T., et.al., Synthesis of a novel phenytoin derivative: crystal structure, Hirshfeld surface analysis and DFT calculations // *Journal of Molecular Structure*, 2020, V. 1205, 127630. <https://doi.org/10.1016/j.molstruc.2019.127630>



12. Naghiyev F.N., Cisterna J., Khalilov A.N., et al., Crystal structure and Hirshfeld surface analysis of acetoacetanilide based reaction products // *Molecules*, 2020, V. 25(9), 2235. <https://doi.org/10.3390/molecules25092235>
13. Spackman M.A., Jayatilaka D. Hirshfeld surface analysis // *CrystEngComm*. 2009, V. 11(1), p. 19-32. [0.1039/B818330A](https://doi.org/10.1039/B818330A)
14. Spackman P.R., Turner M.J., McKinnon J.J., Wolff S.K., Grimwood D.J., et al. CrystalExplorer: A program for Hirshfeld surface analysis, visualization and quantitative analysis of molecular crystals // *Journal of Applied Crystallography*, 2021, V. 54(3), p. 1006-11. <https://doi.org/10.1107/S1600576721002910>
15. Groom C.R., Bruno I.J., Lightfoot M.P., Ward S.C. The Cambridge structural database Structural Science, Crystal Engineering and Materials // *Acta Crystallographica Section B*, 2016, V. 72(2), p.171-9. <https://doi.org/10.1107/S2052520616003954>
16. Atioğlu Z., Akkurt M., Shikhaliyev N.Q., Suleymanova G.T., Bagirova K.N., Toze F.A. Crystal structure and Hirshfeld surface analysis of (E)-1-[2, 2-dichloro-1-(4-nitrophenyl) ethenyl]-2-(4-fluorophenyl) diazene // *Acta Crystallographica Section E: Crystallographic Communications*, 2019, V. 75(2), p. 237-41. <https://doi.org/10.1107/S2056989019000707>
17. Doyle, R.A. MarCCD software manual. 2011. Rayonix LLC, Evanston, IL 60201, USA.
18. Battye T.G., Kontogiannis L., Johnson O., Powell H.R., Leslie A.G. iMOSFLM: a new graphical interface for diffraction-image processing with MOSFLM // *Acta Crystallographica Section D: Biological Crystallography*, 2011, V. 67(4), p. 271-81. <https://doi.org/10.1107/S0907444910048675>
19. Sheldrick G.M. SHELXT—Integrated space-group and crystal-structure determination // *Acta Crystallographica Section A: Foundations and Advances*, 2015, V. 71(1), p. 3-8. <https://doi.org/10.1107/S2053273314026370>
20. Sheldrick G.M. Crystal structure refinement with SHELXL // *Acta Crystallographica Section C: Structural Chemistry*, 2015, V.71(1), p. 3-8.. <https://doi.org/10.1107/S2053229614024218>
21. Farrugia L.J. WinGX and ORTEP for Windows: an update // *Journal of Applied Crystallography*, 2012, V. 45(4), p. 849-54. <https://doi.org/10.1107/S0021889812029111>
22. Spek A.L. checkCIF validation ALERTS: what they mean and how to respond // *Acta Crystallographica Section E: Crystallographic Communications*, 2020, V. 76(1), p.1-10.

**КРИСТАЛЛИЧЕСКАЯ СТРУКТУРА И АНАЛИЗ ПОВЕРХНОСТИ ПО  
ХИРШФЕЛЬДУ 4-{2,2-ДИХЛОР-1-[(Е)-(2,4-ДИХЛОРФЕНИЛ)ДИАЗЕНИЛ]ЭТЕНИЛ}-  
N,N-ДИМЕТИЛАНИЛИНА**

**А.М. Магеррамов<sup>1</sup>, У.Ф. Аскерова<sup>1</sup>, Н.Э. Ахмедова<sup>1</sup>, А.Б. Аскарров<sup>2</sup>, Д.В. Тагиев<sup>3</sup>,  
Ш.Я. Гахраманова<sup>3</sup>, И.М. Шихалиева<sup>1</sup>, Ш.Х. Мухтарова<sup>4</sup>, М. Аккурт<sup>5</sup>**

<sup>1</sup>*Бакинский государственный университет, ул. Академика Захида Халилова, 23, 1148, Баку, Азербайджан,*

*электронная почта: Askerova.ulviyuva.69@gmail.com, sahnaz.gahramanova@gmail.com.*

<sup>2</sup>*Сумгаитский государственный университет, ул. Баку, 1, 5008, Сумгаит, Азербайджан*

<sup>3</sup>*Институт Катализа и неорганической химии НАНА, пр. Г.Джавида 113, AZ1143Баку, Азербайджан*

<sup>4</sup>*Азербайджанский технический университет, проспект Гусейна Джавида, 25, Баку 1073, Баку, Азербайджан*

<sup>5</sup>*Университет Эрджисес, Енидоган, улица Турхан Байтон №:1, 38280 Талас, Кайсери, Турция*

**Резюме:** В исследуемом соединении C<sub>16</sub>H<sub>13</sub>Cl<sub>4</sub>N<sub>3</sub> двугранный угол между бензольными кольцами дихлорфенильной и диметиланилиновой групп равен 50,85 (13)°. Центральный блок –N=N– имеет конфигурацию E. В кристалле молекулы образуют слои, параллельные плоскости (100) посредством C—N··π и встречных π-π [расстояния между центроидами = 4,0538 (17) и 4,0537 (17) Å] взаимодействий. Эти слои соединены взаимодействиями Ван-

дер-Ваальса для стабилизации кристаллической структуры. Анализ поверхности Хиршфельда показывает, что наиболее важный вклад в кристаллическую упаковку вносят  $Cl \cdots H/H \cdots Cl$  (36,4%),  $H \cdots H$  (23,3%) и  $C \cdots H/H \cdots C$  (15,2%) контакты.

**Ключевые слова:** Молекулярная структура, Дихлордиазилены, Отпечаток пальца, Диметиланилиновая группа, Ван-дер-Ваальсовы взаимодействия

#### 4-{2,2-DİXLOR-1-[(E)-(2,4-DİXLORFENİL)DİAZENİL]ETENİL}-N,N-DİMETİLANİLİN KRİSTAL QURULUŞU VƏ HİRŞFELD SƏTH ANALIZI

A.M. Məhərrəmov<sup>1</sup>, U. F. Əsgərova<sup>1</sup>, N. E. Əhmədova<sup>1</sup>, A.B. Əsgərov<sup>2</sup>, D.B. Tağıyev<sup>3</sup>, Ş.İ. Qəhrəmanova<sup>3</sup>, İ.M. Şıxəliyeva<sup>1</sup>, S.H. Muxtarova<sup>4</sup>, M. Akkurt<sup>5</sup>

<sup>1</sup>Bakı Dövlət Universiteti, Akademik Zahid Xəlilov küçəsi 23, 1148 Bakı, Azərbaycan, email:askerova.ulviyya.69@gmail.com, sahnaz.gahramanova@gmail.com.

<sup>2</sup>Sumqayıt Dövlət Universiteti, Bakı küçəsi 1, 5008, Sumqayıt, Azərbaycan

<sup>3</sup>AMEA Kataliz və Qeyri-üzvi Kimya İnstitutu, H.Cavid pr. 113, AZ1143Bakı, Azərbaycan

<sup>4</sup>Azərbaycan Texniki Universiteti, Hüseyn Cavid prospekti 25, Bakı 1073, Bakı, Azərbaycan

<sup>5</sup>Erciyes University, Yenidoğan, Turhan Baytop Street No:1, 38280 Talas, Kayseri, Turkey

**Xülasə:** Tədqiq edilən  $C_{16}H_{13}Cl_4N_3$  birləşməsində, dixlorofenil və dimetilanilin qruplarının benzol halqaları arasındakı dihedral bucaq  $50,85 (13)^\circ$  bərabərdir. Mərkəzi  $-N=N-$  fraqmenti E konfigurasiyasına malikdir. Kristalda molekullar  $C-H \cdots \pi$  və üz-üzə  $\pi-\pi$  qarşılıqlı təsirlər [mərkəzdən mərkəzə məsafələr =  $4,0538 (17)$  və  $4,0537 (17) \text{ \AA}$ ] ilə (100) müstəvisinə paralel təbəqələr əmələ gətirirlər. Bu təbəqələr kristal quruluşu sabitləşdirmək üçün Van der Waals qarşılıqlı qüvvələri ilə əlaqələnir. Hirshfeld səthinin təhlili göstərir ki, kristal qablaşdırma üçün ən mühüm töhfələr  $Cl \cdots H/H \cdots Cl$  (36,4%),  $H \cdots H$  (23,3%) və  $C \cdots H/H \cdots C$  (15,2%) əlaqələr verir.

**Açar sözlər:** Molekul quruluşu, Dichlorodiazadienes, Barmaq izi, Dimetilanilin qrupu, Van der Waals qarşılıqlı təsirləri